



## Buildings at Youlbury

### Bear's Den

Bear's Den is a bright, modern and spacious lodge set on the edge of the Top Field at Youlbury, with access to unload directly into the building from Gate 3.

The lodge sleeps 50 with two single rooms, four twin rooms, one four-bed room, and six six-bed rooms. Every room has an en-suite with toilet, sink and shower. One of the double rooms is accessible, with an accessible wet room.

Beds are provided mattress-only, so make sure you bring a sleeping bag and pillow.

The building has a commercial kitchen with everything you need to cater for a group of 50 people. This includes a large oven and hob, fridge, freezer, microwave, hot water boiler and dishwasher. We also provide crockery, cutlery, utensils, pots and pans, and basic cooking equipment.

There's a large main hall for dining or activities, with tables and chairs to seat your group. The main hall is equipped with a projector, screen and AV system for any activities, or just watching a film.

There's a foyer space with sofas for leaders to relax in the evening; and a drying room too for muddy boots, complete with a washing machine for any emergencies.



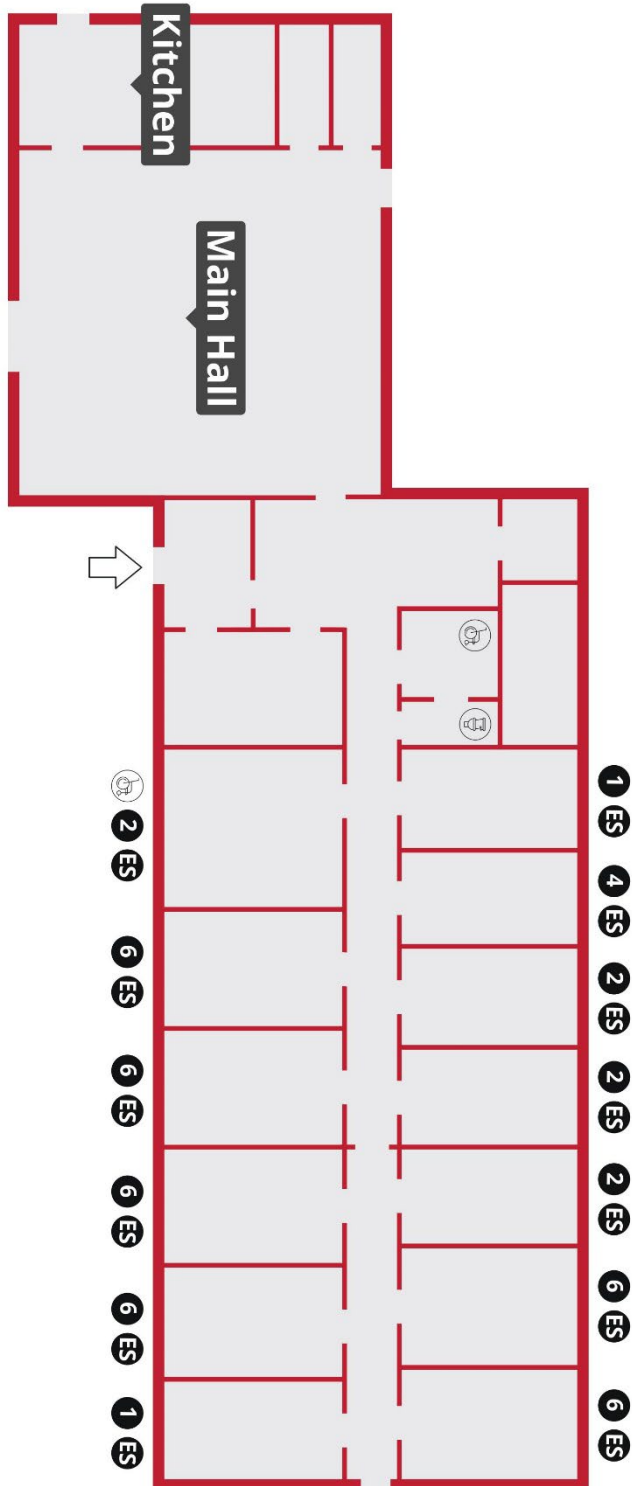
Scout Adventures is owned and managed by The Scout Association reg. Charity numbers 306101 (England and Wales) and Sc038437 (Scotland), working in partnership with Scouts Scotland (Scottish charity no. Sc017511).



# Scout

## Adventures

### Bear's Den





## Centenary Lodge

Centenary Lodge is fantastic for smaller groups, with the same airy, modern feel as Bear's Den. It's set at the top of the centre, next to the parking area at Gate 2.5.

The lodge sleeps 36 with two twin rooms, two four-bed rooms, and four six-bed rooms. Every room has an en-suite with toilet, sink and shower. One of the double rooms is accessible, with an accessible wet room.

Beds are provided mattress-only, so make sure you bring a sleeping bag and pillow.

The building has a commercial kitchen with everything you need to cater for a group of 36 people. This includes a large oven and hob, fridge, freezer, microwave, hot water boiler and dishwasher. We also provide crockery, cutlery, utensils, pots and pans, and basic cooking equipment.

There's a large main hall for dining or activities, with tables and chairs to seat your group. The main hall is equipped with a projector, screen and AV system for any activities, or just watching a film.

There's a foyer space with sofas for leaders to relax in the evening; and a drying room too for muddy boots, complete with a washing machine for any emergencies.

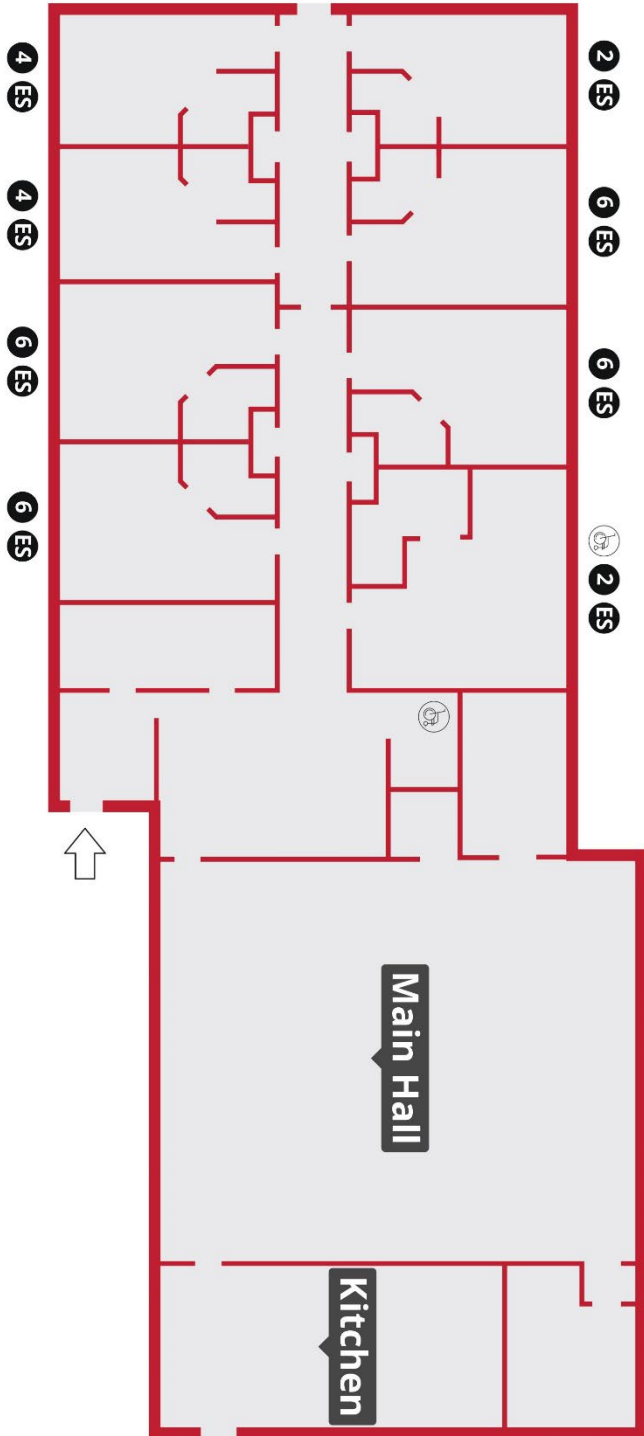




# Scout

## Adventures

### Centenary Lodge





## Lawn Hut

Next to our two Tented Villages and the Lawn camping pitch, the Lawn Hut is a great daytime space for any groups that need some shelter for activities or dining whilst camping with us.

Seating about 50 people, the building consists of one lit hall space, with tables and chairs for your group.

There's no kitchen space or access to electricity or water within the building, so you'll still need a camp kitchen. We're hoping to refurbish the Lawn Hut in the future to include these facilities.

It's just a short walk from our reception toilet block, which also has a couple of washing up sinks outside for after-dinner clear up.